

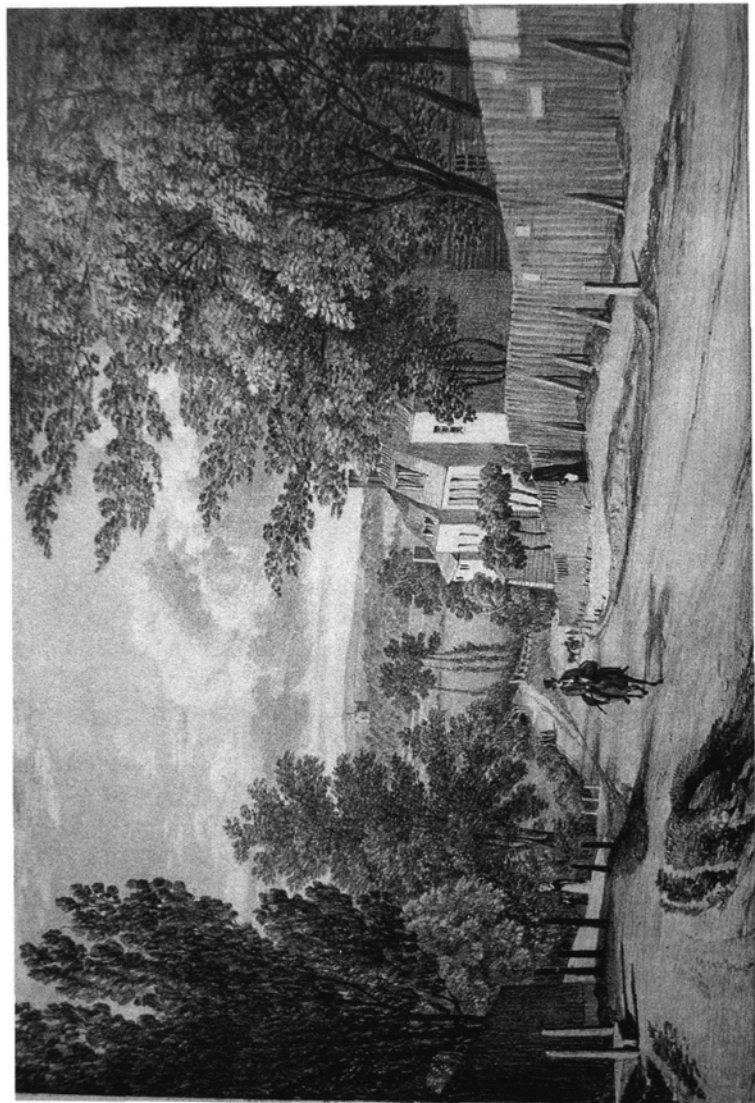


<http://kentarchaeology.org.uk/research/archaeologia-cantiana/>

Kent Archaeological Society is a registered charity number 223382

© 2017 Kent Archaeological Society

# Archæologia Cantiana



Images of Kent No. 3. 'The Road from Blackheath to Lewisham' (from the KAS Library Collections)

# Archæologia Cantiana

Being Contributions to the History and Archaeology of Kent



VOLUME CXXV

2005

*Published by the*

KENT ARCHÆOLOGICAL SOCIETY

Registered Charity no. 223382

© 2005 Kent Archaeological Society

ISSN 0066-5894

Produced for the Society by Past Historic, Kings Stanley, Gloucestershire

Printed in Great Britain

## NOTICES

1. Neither the Council nor the Hon. Editor is answerable for opinions put forward in this work. Each contributor is alone responsible for the contents of his/her paper.

2. 'Notes for the Guidance of Contributors to *Archaeologia Cantiana*' is published in this volume at pp. 431-2.

3. **An expansion of membership would enable the Society to publish a larger volume of material and provide more practical assistance for private researches. Information about the Society's activities and forms of application for membership may be obtained from the Hon. General Secretary (A.I. Moffat, Three Elms, Woodlands Lane, Shorne, Gravesend, Kent, DA12 3HH). Members are urged to encourage friends and colleagues, interested in archaeology/history, to join the Society. Young people (under 21 years) are offered a much reduced membership fee.**

4. Subscriptions are due on the 1st of January each year and should be paid only to the Hon. Membership Secretary. It would be a great convenience if members could pay their subscriptions by banker's order. Members who do not pay by this means are requested to settle their subscriptions promptly. (A notice of renewal is enclosed in the Winter edition of the newsletter). The benefits of membership will be withheld from any member whose subscription is more than three months overdue. Details of subscription rates and payment by banker's order may be obtained from the Hon. Membership Secretary, to whom any change of address or error in published lists of members should be notified. (Mrs. S. Broomfield, 8 Woodview Crescent, Hildenborough, Tonbridge, Kent, TN11 9HD.)

5. Legacies have contributed much to the strength and independence of the Society. The Hon. Treasurer would be pleased to hear from any member who would like to bequeath money or other assets. Additional contributions in the form of donations, including those for particular activities of the Society, are also very welcome and should be sent to the Hon. Treasurer (R.G. Thomas, 1 Abchurch Yard, Abchurch Lane, London, EC4N 7BA).

6. The Society's room at Maidstone Museum is open to members who wish to consult its reference library. (It is essential to bring your membership card.) Enquiries should be addressed to the Hon. Librarian (F.H. Panton, Grove End, Tunstall, Sittingbourne, Kent ME9 8DY).

*All rights reserved. No part of this publication may be reproduced, stored in a retrieval system, or transmitted, in any form or by any means electronic, mechanical, photocopying, recording or otherwise without the permission of the Kent Archaeological Society.*